

# TRAFFIC PRO BEDS®

## PRODUCT LITERATURE

JAMIE@TRAFFICPROBEDS.COM

TRAFFICPROBEDS.COM

(240) 447-3272



# BUILT TO SAVE

# WHAT MAKES US DIFFERENT

BUILT BY EXPERIENCE. BUILT TO SAVE.

## OUR STORY

### THE BEGINNING

Out of tragedy, Traffic Pro Beds was founded with one simple mission. **SAVE LIVES.**

When our founder Skip Tovornik couldn't find a traffic control solution that truly prioritized employee safety, he created one himself. **With over 30 years of traffic control experience** and a decade of product development, he invented the Traffic Pro Bed System — a solution designed to protect employees, save time, and reduce costs.

With the NHTSA reporting as many as +90,000 work zone accidents, +35,000 injuries, +800 deaths per year, Skip knew his problem was a common one.

### SINCE THEN

In 2019, Traffic Pro Beds **earned industry recognition at ATSSA's Annual Innovation Award competition** and is being adopted nationwide by both private companies and government entities, driven by our employee-centered motto: **BUILT TO SAVE LIVES, TIME, AND MONEY.**

Available in four configurations and six series for mid-sized to heavy-duty trucks, **Traffic Pro Beds' patented Built to Save system** enhances traffic control safety while boosting operational efficiency, organization, equipment longevity, storage capacity, and cost savings.

### NOW

We have doubled down on our mission to save lives by unveiling a variety of new dynamic products that cater to different traffic control approaches across the nation. These products not only represent another opportunity for traffic operations to prioritize safety in their day-to-day operations but also mark a new age for Traffic Pro Beds as a provider of diversified, safety-driven, innovative solutions for the traffic control industry at large.

1

## OUR SERVICE

When you choose Traffic Pro Beds, you're not just choosing a safer approach to traffic control for you and your crews. You're choosing a customer-first, solutions-driven collaborator. Here's how we do it.

**Collaboration** We understand that each state's standards and every company's needs are unique, which is why we're committed to working closely with every client to identify the traffic control solution that fits them best. To meet these diverse needs, **we offer a wide array of unique products and are even open to designing new ones.**

**Customer Service** We understand the importance of personalized guidance and clear communication. So we guarantee you will always have one primary point of contact throughout and following your completed order, to give you updates on an order and follow-up with you on your experience with your Traffic Pro Beds.

**PAIR** The Public Agency Initial Requisition (PAIR) program, is our commitment to go above and beyond for government agencies to slice through any red tape and to get them the traffic safety solutions their crews deserve.

**Financing** With flexible financing options we can always help do what's best for your budget. Our financing partners make investing in fleet safety an easy and safe option for any company by providing flexible programs, fast financing, competitive rates, and personalized service.

# BUILT TO SAVE

**LIVES. TIME. MONEY.**

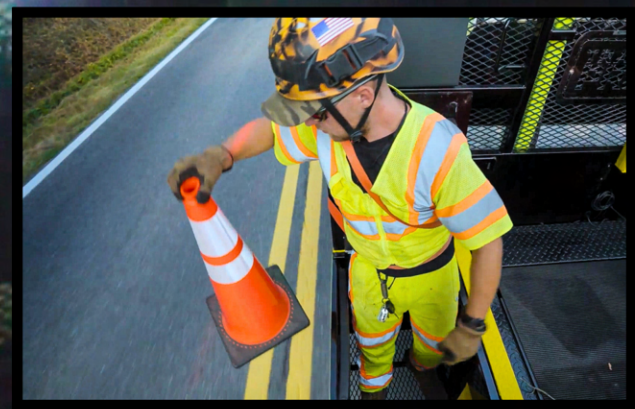


TRAFFIC PRO BEDS



TRAFFIC PRO BEDS

TRAFFIC PRO



# BUILT TO SAVE

## LIVES

**SAVING LIVES.** In an unpredictable industry, you need to *control what you can*. **Keeping traffic employees safe is the foundation of our business, mission, and design.** From set-up to take-down empower your employees to make the safest decision possible every time.

Learn more on page 9.

## TIME

**SAVING TIME** by prioritizing **practicality.** Designed by traffic employees for traffic employees. The Traffic Pro Bed system is always one step ahead of the operation.

Learn more on page 9.

## MONEY

**SAVING MONEY.** This truck bed **pays for itself in under two years.** This solution reduces your labor, optimizes your crews, maximizes equipment, and prevents long and short-term employee injuries. **With an estimated \$40,000 of annual savings per two-person crew,** this is the best system for your bottom line.

Learn more on page 10.



**"CONTROL WHAT YOU CAN."**

# KEY COMPONENTS

AND WHAT MAKES EACH OF THEM BUILT TO SAVE.

## EMPLOYEE SAFETY UNIT (ESU)

Between the OSHA-compliant safety restraint system, unit positioning, enclosed design, and safety padding, among other life-saving details, the ESU maximizes practical safety and security in a work zone to ultimately **save** the **LIVES** of your employees before they're at risk.

This component is available individually from Traffic Pro Bed configurations.

Learn more on page 11.



## SIGN AND STAND BOX

Optimize equipment access and organization without cutting employee safety. This design keeps equipment secured, yet central to employees and the ESU. So equipment is always safely and easily accessible in the most practical way possible to make safe decisions, **save TIME**, and maximize operating efficiency.

This component is available individually from Traffic Pro Bed configurations.

Learn more on page 12.



## CONE DRIVE SYSTEM

One driver, one deployer, and the push of a button are all it takes to set up and take down a work zone. Instantly increase safety, optimize crew capacity, decrease risk, maximize labor efficiency, cut time, and ultimately **save MONEY** with this one system.

This component is available with any Traffic Pro Bed configuration.

Learn more on page 12.



# RETROFIT YOUR FLEET

You don't need a Traffic Pro Bed to have a Traffic Pro Bed. Make your fleet Built to Save one component at a time. These components offer unmatched modularity, equaling unlimited opportunity and versatility for any traffic control fleet to be Built to Save.

Swap components between Traffic Pro Beds and even make a Traffic Pro Bed from any normal truck deck. With the proper hardware, easily install a pair of sign and stand boxes or ESUs to a truck deck, as well as many other worthwhile options. Check them out below.



NEW

## SANDBAG HOLDER

Give sandbags their own dedicated space on your truck where they're all together, organized, out of the way, and easy to access. Positioned right next to the ESU. This product provides convenient and ergonomic access for deploying and collecting sandbags. It also functions as a secured storage space for equipment like a toolbox or cooler.

Keep employees on the safe side of the truck. Minimize the range of motion and lifting required to deploy or store sandbags. Easily install to a truck deck.

## TYPE-2 BARRICADE HOLDER

Engineered to enhance safety and efficiency in traffic control operations, these racks offer both secure storage and quick access to Type-2 adjustable barricades.

Whether during work zone setups, emergency responses, or public events, this innovation speeds up the process of setting up and removing barricades, keeping employees protected by the truck, and significantly reducing the time they are exposed to traffic.

Easily install on any truck deck that meets appropriate specifications.

## TYPE-2 BARRICADE HOLDER

Keep many signs and stands organized and safely accessible. Positioned against the headboard of a truck this extended sign and stand box sits right behind the ESU, where employees can safely access stands from their ESU. Extending across the truck bed, signs are always accessible from the safe (non-traffic) side of the vehicle. Holds 24 large sign stands and many signs.

Easily install on any truck deck that meets appropriate specifications.

## EMPLOYEE SAFETY UNIT



## SINGLE DOOR SIGN BOX



## SIGN AND STAND BOX



# CONFIGURATIONS

Every Traffic Pro Bed configuration includes LED work lights, LED Amber Strobe lights, Orafol America V98 Reflective Tape, LED body marking lights, and Red/White Marking Tape.

## BASE SAFETY

**Safety starts here.** Start employee safety on the right path. This model gets employees off the back of the truck bed, just behind the cab, into their OSHA compliant ESU with safety restraint system. Here employees are less likely to get hit directly, and are more protected and secured from a hit. From here, add options with ease. Learn more on page 15.

## FULL STAKE

The Full Stake Body is equipped to support highway jobs requiring many big devices and temporary equipment rigs (such as a spray rig). Safely and easily store, access, and deploy all of your devices from your ESU with our aluminum swing down stake fencing. Equipment separators for each side of the deck are highly recommended for this model. Learn more on page 15.

## HALF STAKE

Equipped for industries with traffic control needs. This model combines the safety of a Full Traffic and the storage flexibility of the Full Stake model. Maintain TPB's organizational efficiency and safety, with more space for cones, barrels, grabbers, and other equipment. Easily load and unload with aluminum swing-down stake fence. Learn more on page 14.

## FULL TRAFFIC

Equipped for lots of signage and small to midsize traffic operations. This dedicated traffic control truck bed is an asset to any operation. Maximize sign and stand storage and organization. Keep your workers safer on the road. Handle several small jobs or a few mid-sized ones fast and efficiently. Learn more on page 13.



**NEW**

# SPECIALTY

## 100 SERIES TRAFFIC PRO BED

Designed for Class 2 trucks, the 100 series comes in the Base Safety and the Full Stake Body configuration, which features either an 18-inch (pictured) or 30-inch fold-down aluminum stake fence and two ESUs each with a safety restraint system. This series is designed primarily for small traffic control operations, flagging operations, and highway debris removal. This is also an option to supplement equipment requirements for large traffic control operations. Learn more on page 18.

## TRAFFIC PRO TRAILER

Are you limited to trailers for your traffic control needs? Here is your solution. Upgrade with our Traffic Pro Trailer kit. Simply put, it's TPB's signature Built to Save system adapted for a trailer apparatus. Designed with first responder/emergency traffic control in mind. Sign and stand boxes keep equipment secured, organized, and easily accessible from both sides of the trailer. Fold-down and removable aluminum stake fencing make it easy and safe to access the trailer and its equipment. Learn more on page 17.







**BUILT TO SAVE**

# LIVES

**SAVING LIVES** by making it easy for you to keep your employees safe is the foundation of our business, mission, and design, and **this is how it's done.**

Employees in the ESU are optimally positioned to safely facilitate the majority of work zone tasks while protected by the truck bed. From the ESU, located just behind the cab of the truck, employees are secured to the truck bed where they are less likely to be the first point of contact during a collision and effectively shielded by the bed from most collisions. Being secured with the safety restraint system, prevents falling or ejection as a result of a collision.

The ESU enclosed box design and extensive safety padding allow employees to maintain a firm leg lock in the ESU, preventing falls, injuries, and fatigue during an operation.

From the ESU, employees have quick access to signs, stands, and cones while still secured to the truck.

The sign and stand boxes on both sides of the truck bed make it easy for employees to always access equipment from the safe side of the truck, never risking their lives by going around the back or stepping on the traffic side of the truck. The truck bed is always being treated as a shield.

The Traffic Pro Bed's unique high-visibility design commands authority and grabs motorists' attention.

Extensive equipment storage and securing mechanisms prevent equipment from falling on and injuring employees.

# TIME

**SAVING TIME by prioritizing practicality.** The intuitive design of the Traffic Pro Bed keeps equipment close to employees and employees close to the truck. So safety and efficiency are maximized, **not compromised.** Time and energy are only going into what counts.

With an unmatched organizational layout, this system is engineered so your employees can always easily access needed equipment at any given time during an operation.

The cone drive system lets a single employee move cones throughout the truck bed **quickly and effortlessly** with just the push of a button.

Load and unload all equipment with ease, and take inventory at a glance.

**The intuitive mounting system makes a Traffic Pro Bed easy to upfit or transfer chassis in-house.** All you need is a professional upfitter and the proper equipment. So upfits and transfers don't keep trucks out of commission for weeks.

The recent release of several new modular storage and organizational products perpetuates the above time-saving qualities of a Traffic Pro Bed's Built to Save system and further scales its application to accommodate unique regional and state specifications at large. See page 19 for more information on these products.

# MONEY

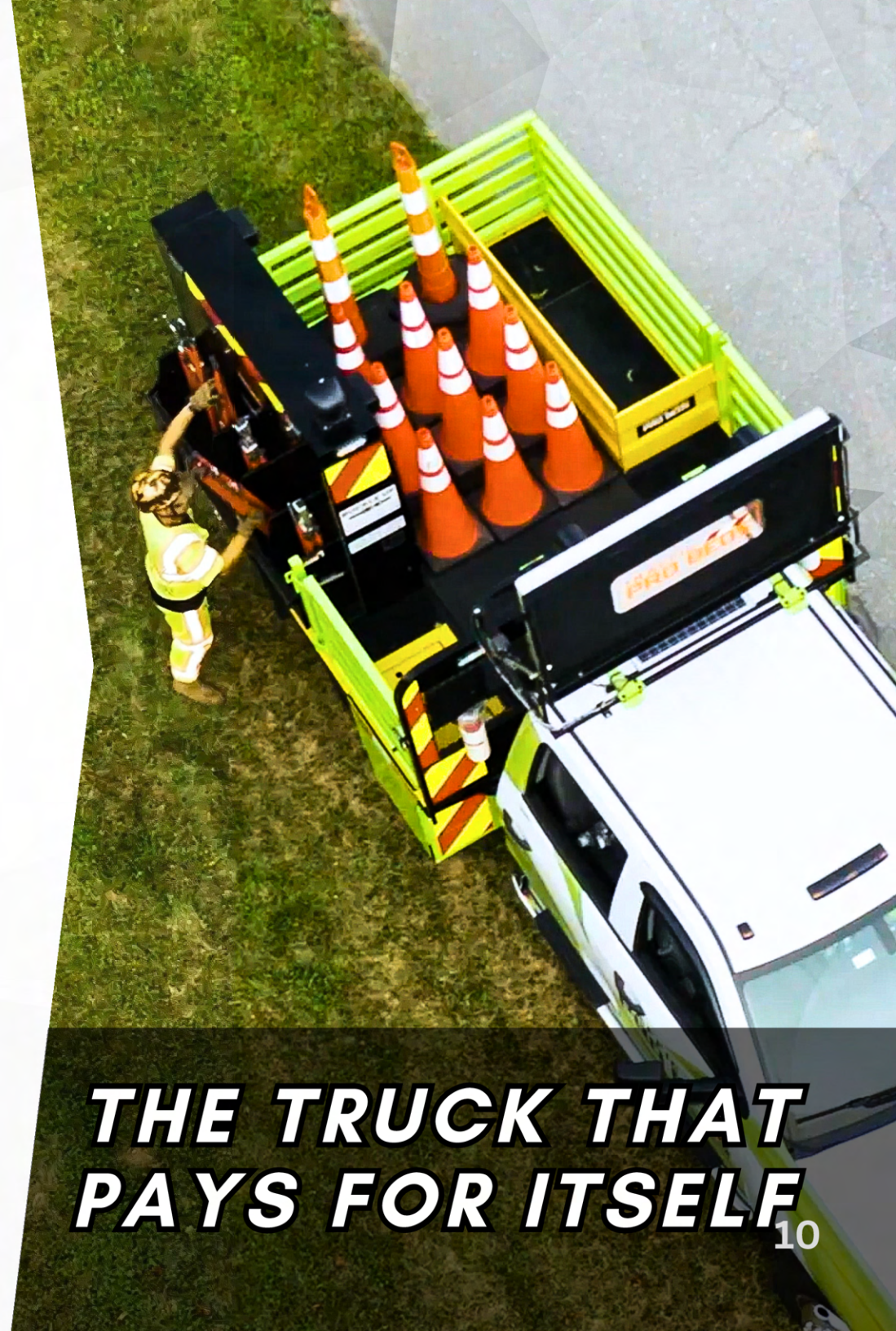
**SAVING MONEY.** Introducing the best system for your bottom line. **This truck bed pays for itself in less than two years** by reducing the employees required per crew, increasing equipment longevity, outlasting multiple chassis, and minimizing work-related injuries and risks to your most important asset — your employees.

Use the cone drive system to reduce employee requirements by one person per crew. This optimizes operating costs, providing a quick solution to **combat labor shortages and increase operating capacity to meet demand** without going through the costly hassle of hiring and training. This effectively defers a day's wages to another project, decreasing average operating costs and increasing profit margin to realize an **estimated \$40,000 of annual savings per two-person crew.**

The optimal bed layout maximizes equipment storage. So crews avoid using additional trucks just to transport equipment. This organizational system keeps equipment separate, organized, and secured, increasing equipment life span by preventing equipment damage and loss. Which can cost a company as much as an estimated **\$3,000 per truck annually.**

The Traffic Pro Bed is designed with quality craftsmanship and constructed from quality materials such as galvanized steel, aluminum, powder coating, and stainless steel to outlast multiple chassis with low maintenance.

This safety system is meant to prevent injuries and protect employees from incidents in any way it can, from eliminating fall hazards and risky situations to preventing the tiniest bumps and bruises, so employees are healthy enough to keep working, and costly worker compensation claims are minimized.



**THE TRUCK THAT  
PAYS FOR ITSELF**

# KEY COMPONENTS

## EMPLOYEE SAFETY UNIT (ESU)

The ESU with the safety restraint belt is the keystone of TPB's safety system.

The safety restraint system secures employees to the truck, bringing them into **OSHA compliance** and national seatbelt standards, by preventing falls and ejection while retaining a full range of motion.

Raise or lower the safety restraint system and ESU height to accommodate employee height, and avoid curb strikes.

**Head, neck, and leg padding** prevent injuries and bruising from a rough ride.

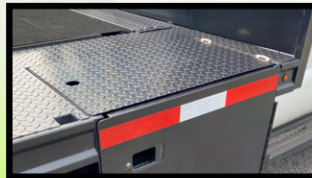
The **enclosed box design** shields from asphalt and debris and allows employees to maintain a firm leg lock inside the ESU during deployment and pick-up, preventing fatigue, falls, and injuries.

**ESU position** keeps employees more shielded by the bed during a collision and effectively increases visual and verbal communication with the driver.

Use the **ESU for additional equipment storage** or close the lid to create more deck space.

The left and right **corner steps** make getting onto the truck bed easy and safe. The **expanded metal bottom** allows employees to scrape debris and asphalt off of their boots.

This component is available individually from Traffic Pro Bed configurations.



# SIGN AND STAND BOX

Always have safe access to devices in and around the truck bed. No longer risk your life or waste time going around or climbing into the truck bed to pull equipment.

Keep equipment secured from falling onto employees or out of the truck.

Keep devices separate, organized, and secure in order of deployment and in their designated place in the truck bed to have easy access, prevent equipment damage, and reduce equipment-associated injuries.

Store up to 10 small stands and at least 15 roll-up signs per sign and stand box.

Each sign box comes with 4 amber strobe lights, as well as an interior light to help employees see signs during nighttime set-up.

This component is available individually from Traffic Pro Bed configurations.



# CONE DRIVE SYSTEM

Move cones in the truck with the push of a button; maintaining quick access to all cones on the cone drive while safely secured in your ESU.

Eliminate the need for a crew member in the back of the truck, increasing worker safety and workforce efficiency.

With the push of a button, instantly have cones brought up from the back of the truck bed while safely secured in your ESU.

The cone drive for the 200 series (pictured) comes with two cone rows, while the cone drive for the 300, 400, 500, and 800 series comes with three cone rows.

# CONFIGURATIONS

## FULL TRAFFIC BODY CONFIGURATION

### FEATURES

- 2 Sign and Stand Boxes
- 2 ESUs
- 2 Safety Restraint Systems
- 1 Headboard
- 1 Tailgate
- 4 Work LEDs
- 2 Sign Box LEDs
- 13 Amber Strobe LEDs
- Oralite V98 Reflective tape
- Body marking LEDs
- Red/White Marking tape

### OPTIONS

- VMS and Arrow board
- Cone drive
- Halo light system
- Custom colors
- Tool boxes
- Solar idle system
- GPS alert system
- Stop/slow paddle box
- Camera systems
- Advanced lighting systems
- Other options

### ABOUT

The Full Traffic configuration is designed to cover several small to midsized operations. Maximize sign and stand storage and organization. Keep employees safer on the road. Get the job done faster and more efficiently. Recommended for utility, and dedicated traffic control companies.



# HALF STAKE BODY CONFIGURATION

## FEATURES

- 1 Sign and Stand Box
- 2 ESUs
- 2 Safety Restraint Systems
- Half Stake Fencing
- 1 Headboard
- 1 Stake Fence Tailgate
- 5 Work LEDs
- 1 Sign Box LED
- 9 Amber Strobe LEDs
- Oralite V98 Reflective tape
- LED body marking lights
- Red/white marking tape

## OPTIONS

- VMS and Arrow board
- Cone drive
- Halo light system
- Custom colors
- Tool boxes
- Solar idle system
- GPS alert system
- Stop/slow paddle box
- Camera systems
- Equipment separator
- Advanced lighting systems
- Other options

## ABOUT

Ideal for occasional traffic control needs and landscaping operations. The Half Stake Body configuration is a worthwhile compromise between a Full Traffic model and a Full Stake model. Have all the space you need for cones, barrels, and grabbers while maintaining the safety, organization, and efficiency of our sign and stand box. With swing-down aluminum stake fencing, easily load and unload devices and equipment of all shapes and sizes.



# FULL STAKE BODY CONFIGURATION

## FEATURES

- 2 ESUs
- 2 Safety Restraint Systems
- Full Stake Fencing
- 1 Headboard
- 1 Stake Fence Tailgate
- 4 Work LEDs
- 5 Amber Strobe LEDs
- Oralite V98 Reflective Tape
- LED body marking lights
- Red/White Marking Tape

## OPTIONS

- VMS and Arrow board
- Cone drive
- Halo light system
- Custom colors
- Tool boxes
- Solar idle system
- GPS alert system
- Stop/slow paddle box
- Camera systems
- Equipment separator
- Advanced lighting systems
- Other options

## ABOUT

The Full Stake Body configuration maximizes equipment storage capacity and flexibility. Store many large devices with room for temporary equipment rigs (such as spray rigs) on a 100 series and up. Safely and easily store, access, and deploy all of your devices from your ESU on either side of the bed with our aluminum swing-down stake fencing.



# BASE SAFETY CONFIGURATION

## FEATURES

- 2 ESUs
- 2 Safety Restraint Systems
- 1 Headboard
- 4 Work LEDs
- 5 Amber Strobe LEDs
- Oralite V98 Reflective Tape
- LED body marking lights
- Red/White Marking Tape

## OPTIONS

- VMS and Arrow board
- Cone drive
- Halo light system
- Custom colors
- Tool boxes
- Solar idle system
- GPS alert system
- Stop/slow paddle box
- Camera systems
- Advanced lighting systems
- Other options

## ABOUT

Start your crew safety on the right path with our Base Safety Configuration. This is the base of all Traffic Pro Bed configurations. It gets your employees off the back of the truck bed, just behind the cab, and brings your crew into OSHA compliance and national seatbelt safety standards. By doing so, you make your employees less likely to get hit directly, more protected if the vehicle is hit directly, and more secure from falling or being ejected during a collision. From here, add options to take your operation to the next level. Rest assured you can always add our exclusive options later with ease.





[TRAFFICPROBEDS.COM](http://TRAFFICPROBEDS.COM)

# TRAFFIC PRO TRAILER

The Traffic Pro Trailer is designed to enhance operational safety, efficiency, and response time for work zones. It is particularly beneficial for entities that operate on dedicated traffic control trailers in first-response, public event, and evacuation scenarios.

Available as a kit or installed onto a trailer, this trailer system is meant to be loaded with MOT equipment, and stored in the yard, ready to be hitched and deployed quickly.

Upon arrival to a work zone or incident, the trailer can be positioned so it immediately shields an area. Its easy-to-remove stake fencing and swing brackets ensure that equipment remains safely accessible from the safe and protected side of the trailer. This option enables employees to work efficiently without compromising safety.



# TPB 100 SERIES

Designed for Class 2 trucks, the 100 series comes in the Base Safety and Full Stake Body configuration, featuring either an 18 inch or 30 inch fold-down aluminum stake fence and two ESUs with safety restraint system. This series is designed primarily for small traffic control operations, flagging operations, and highway debris removal. This is also an option to supplement equipment requirements for large traffic control operations.

Aluminum fold-down stake fence evens the playing field for all of your employees. At least 30% lighter than steel, this stake fencing makes traffic control work less strenuous and demanding for employees.

Rigid posts and spring-loaded lock hinges keep the fence in place and prevent rattling. Meanwhile, quick disconnecting hinges make it easy to add, remove, or interchange stake fencing with sign and stand boxes. Aluminum, rubber bumpers, and catches prevent damage and corrosion.



# OPTIONS

Take your Traffic Pro Bed to the next level with our wide variety of options. Check out each option to learn how it will enhance your fleet. Some option restrictions may apply.

## UPGRADED HALO LIGHT

An upgrade to our standard halo light, this laser light technology provides a very distinct ground-lit perimeter about 240° around the back of the TPB, encouraging motorists to delineate away from the vehicle.



## SAND BAG HOLDER

Give your sand bags their own dedicated space on your truck where they are all together, ergonomically accessible, secured, organized, and convenient. More on page 5.



## TYPE-2 BARRICADE HOLDER

Securely stores barricades where they are easily accessible from the safe side of the truck. ergonomic rack design and location allow employees to quickly, safely, and comfortably deploy access barricades. More on page 5.



## EXTENDED SIGN STAND BOX

Keep many signs and stands organized and safely accessible. Positioned against the headboard of a truck this extended sign and stand box sits right behind the ESU, where it's safely accessible. More on page 5.



## EMPLOYEE SAFETY UNIT (ESU)

Each unit comes complete with OSHA compliant safety restraint belt system, safety padding, and lid. Unit comes in two sizes and can be acquired as a stand alone item. More on page 11.



## SAFETY RESTRAINT SYSTEM

This OSHA compliant safety restraint belt is included with all ESUs. Designed to prevent employees from falling or being ejected from the vehicle during collision. More on page 11.



## CONE DRIVE

Have cones move throughout the truck with the push of a button. No help needed, no stopping, and no getting out of the ESU required. Cone drive comes in two different widths depending on truck specifications. More on page 12.



## SIGN STAND BOX

Keep all signs and sign stands organized, secure, damage free, and always safely in reach. Component is left and right interchangeable and can be acquired as a stand alone item. More on page 12.



## THE LAST LINE OF DEFENSE

For all the times you thought something won't happen in your work zone prepare for when it does. Mount a TMA directly to your TPB so the TMA is impacted; not a truck, not an employee. Other TMA models compatible.



**DUAL VMS/ARROW BOARD MOUNT**

Improve message versatility in a work zone on the fly. front-facing arrow and back-facing VMS allow for dual messaging. Stored between headboard and cab to prevent damage.



**HALO-LIGHT SYSTEM**

This laser lighting technology provides a very distinct ground-lit perimeter on the side of the TPB, encouraging motorists to delineate away from the vehicle. Check out the upgraded Halo-Light.



**SOLAR CHARGING SYSTEM**

Power your truck's electrical system without idling. Charges and stores energy to power a truck's electrical system for over 24 hours. Save gas, save money, and cut emissions.



**DECK PERIMETER MARKING**

Have a high-visibility color on steps and bordering the perimeter of the truck deck, emphasizing steps and edges for employees.



**VMS/ARROW BOARD MOUNTS**

We provide three mounting options for VMS and Arrow boards, including for over the cab, on top of the sign and stand boxes, and between the cab and headboard. Restrictions for certain boards and models may apply.



**VMS/ARROW BOARD**

Have a VMS or Arrow board installed where it's out of the way, and maximizes visibility. Source it through us or provide your own. What ever is best for you. We work with brands including Wanco, Vermac, Solar Technology, etc.



**CAMERA SYSTEM**

Systems for backing-up, work zone surveillance, and more. Options can include 7" monitor, 1 TB wifi/3G/4G capable DVR system, and multiple channels to survey as much of the operation as you need.



**CUSTOM COLORS**

High visibility colors offer an easy way to command authority, garner the attention of motorists, build uniformity, comply with government requirements, and build branding.



**WORK ZONE ALERT**

Make drivers more aware of your work zones. Simply install to a truck's warning lights or arrow/VMS board, and flip a switch to have any work zone locations shared to popular apps, such as Waze and Google Maps.



**ADVANCED LIGHT SYSTEMS**

Go the extra mile with advanced lighting systems for every part of your crew's operation. Ground, scene, GO, HALO laser lighting, as well as well as a variety of strobe and multi-color lighting options available.



**STOP AND SLOW PADDLE BOX**

Always have Stop/Slow paddles secured, accessible, and out of the way. Prevent the majority of storage related damage dealt to your paddles.



**EQUIPMENT SEPARATOR**

Fold up to keep cones aligned and equipment more organized in the bed, or fold down flat against the deck so it's out of the way.



**TOOL BOX**

Always keep spare emergency safety and maintenance tools and equipment in the tool boxes where they are available to crews in a pinch. Comes with lock and key.



**ALUMINUM STAKE FENCE**

Even the playing field for all employees. This light weight stake fencing can be easily folded down, removed, or reconfigured in preparation for deployment. More on page 18.



**SINGLE DOOR SIGN BOX**

Keep signs organized, protected, and safely accessible. Stop the wear and tear of roll-up and dibond signs so they stay in new and near new condition up to three times longer.



# BUILT TO SAVE



[TRAFFICPROBEDS.COM](https://TRAFFICPROBEDS.COM)

# TRUCK BED WEIGHT SPECIFICATIONS

This is the weight of each Configuration by Series.



Series	Base Safety	Full Traffic	Half Stake	Full Stake 30"
200	964 lb.	1,562 lb.	1,335 lb.	1,089 lb.
300	1,049 lb.	1,647 lb.	1,415 lb.	1,167 lb.
400	1,091 lb.	1,689 lb.	1,475 lb.	1,227 lb.
500	1,157 lb.	1,755 lb.	1,630 lb.	1,381 lb.
800	1,669 lb.	2,267 lb.	1,981 lb.	1,715 lb.

# TRUCK SPECIFICATIONS

This is the prescribed \*cone count, truck deck dimensions, and required truck specifications.

Series	*Cone count	Dimensions	Truck class	Truck specs
200	100 cones	120" L x 88" W	2 - 3	¾ to 1 ton SRW truck with a 60" CA
300	200 cones	120" L x 98" W	3 - 5	Dually truck with a 60" CA
400	300 cones	136" L x 98" W	3 - 4	Dually truck with a 84" CA
500	400 cones	152" L x 98" W	5	Dually truck with a 84" to 108" CA
800	500 cones	188" L x 98" W	6	Dually truck with a 127.5" CA

\*The prescribed cone count is based on an estimated maximum quantity of cones with a 12lb average weight per cone. The real load/cone capacity of a given truck may vary and is up to the truck owner and operator to verify before loading. Traffic Pro Beds LLC makes no guarantee to a prescribed cone count or load-bearing capabilities of a Traffic Pro Bed. Load-bearing capabilities are exclusively dependent on the load-bearing capabilities of the truck a Traffic Pro Bed is installed on. It is the full and exclusive responsibility of the purchaser to evaluate the load-bearing capabilities of a given vehicle before the installation and loading of a Traffic Pro Bed.



# COMPONENT SPECIFICATIONS

This is the weight and dimensions of each TPB component.

Option	Length	Width	Height	Weight
Employee Safety Unit 200	27"	17"	29"	107 lb.
Employee Safety Unit 300	27"	21"	33"	129 lb.
Sign and Stand Box	71"	26"	56"	299 lb.
Type-2 Barricade Holder	23.5"	19"	33"	34.5 lb.
Single Door Sign Box	58"	16"	52"	184 lb.
Sand Bag Holder	28"	25.5"	22"	93 lb.





# TRAFFIC PRO BEDS®

JAMIE@TRAFFICPROBEDS.COM  
TRAFFICPROBEDS.COM  
(240) 447-3272



# BUILT TO SAVE